

YOU CAN HELP!

Fewer than one third of adults and one half of children receive the mental health and substance use treatment services they need in a given year.

MENTAL HEALTH FIRST AID TRAINING

Learn the potential warning signs and risk factors for depression, anxiety disorders, trauma, psychotic disorders, eating disorders and substance use disorders. Visit our website for upcoming class registration: valeotopoka.org

DONATE

The Valeo Foundation exists to provide philanthropic support for mental health and substance use disorder treatment programs. You can make a contribution online or by calling 785-215-8863.

PRESENTATION FOR YOUR ORGANIZATION

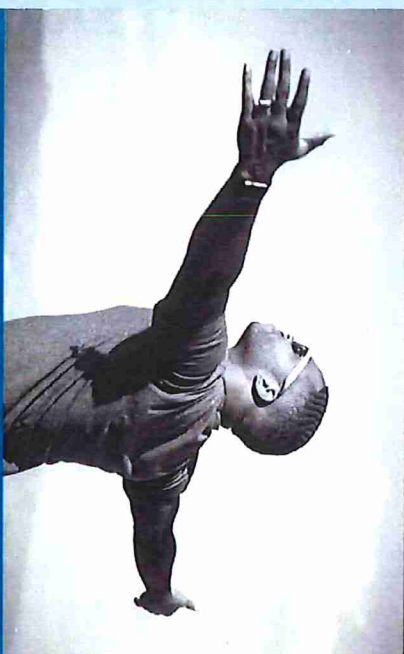
To schedule a Valeo Recovery Center presentation to learn more about our services, contact us at: 785-783-7545.

If you suspect substance use disorder has resulted in homelessness for someone you know, contact 785-783-7545.

VALEO BEHAVIORAL HEALTH CARE SERVICES

- 24 Hour Crisis Intervention
- Primary and Dental Care
- On-site Pharmacy and Laboratory
- Mental Health Assessment
- Residential Care
- Psychotherapy
- Substance Abuse Services
- Case Management
- Medication Management
- Community Medication Outreach
- Homeless Outreach and Housing
- Integrated Dual Diagnosis Treatment
- Expressive Therapies
- Services for Employment Success
- Peer Support
- Community Education and Outreach

Valeo Behavioral Health Care offers mental health and substance use treatment programs to serve adults and families in Northeast Kansas. We accept most insurances, Medicaid, Medicare and offer a sliding scale fee for individuals with limited financial resources.



VALEO RECOVERY CENTER

An ongoing tradition of progressive addiction treatment supporting lasting recovery.

CELEBRATING 50 YEARS OF RECOVERY SERVICES

330 SW Oakley Avenue
Topoka, Kansas 66606
24 Hour Detox Line: 785-234-3448

Visit us at:  or valeotopoka.org



REFERRAL & ASSESSMENT

Individuals seeking substance use disorder treatment will be assessed using the Kansas Client Placement Criteria. Valeo Recovery Center accepts referrals from anywhere within the state of Kansas.

Admissions Staff provide intake, support and referral to appropriate services.

ADMISSIONS

785-233-1730 Ext. 3304
330 SW Oakley Avenue
M-F 8am - 5pm

AFTER HOURS ADMISSIONS

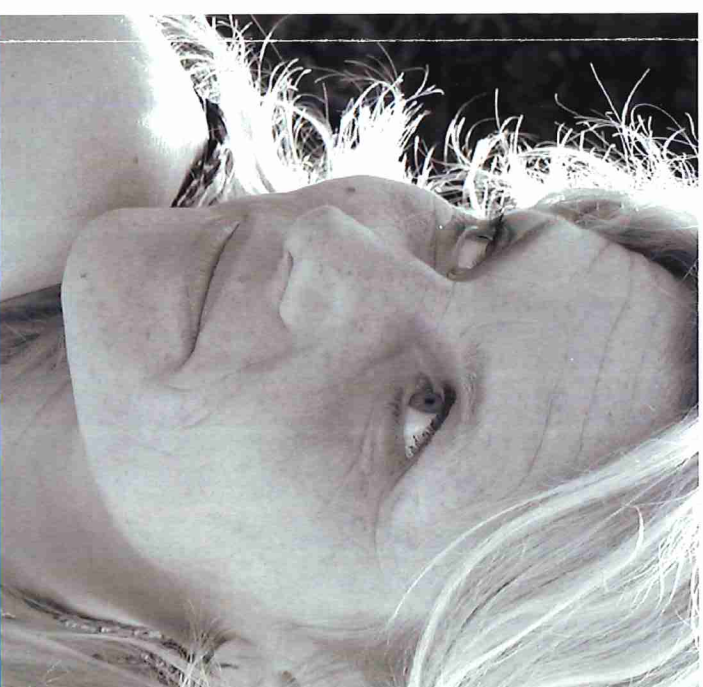
785-234-3448
330 SW Oakley Avenue
Southeast Entrance

VALEO RECOVERY CENTER

Valeo Recovery Center (VRC) serves an adult male and female population experiencing substance use disorders. VRC offers a wide range of treatment services to individuals and their families and accepts consumers with stabilized co-occurring disorders. One on one, and group counseling is provided by Licensed Addiction Counselors during day and evening hours. At VRC the least restrictive level of care to meet the individual's treatment needs is utilized based on assessment. Each treatment experience includes an individualized treatment plan with recommendations for intervention strategies, as well as discharge planning. VRC is dedicated to recovery and relapse prevention.

Services

- Assessment
- Social Detoxification
- Inpatient Residential Treatment
- Reintegration
- Intensive Outpatient Treatment
- Continuing Care Treatment
- Drug Testing
- Homeless Outreach
- Jail Treatment Program



Valeo Behavioral Health Care
330 SW Oakley Avenue
Topeka, KS, 66606
785-233-1730
valeotopeka.org

24 Hour Crisis Hotline
785-234-3300

